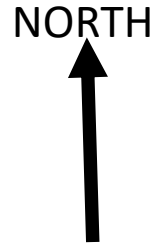



Map 1

Thursday June 6th Route




TRAN
Route is
marked
with
dashes

Alternate Route
if roads are wet

Start TRAN 2019
at Mid-States
Tractor & Engine
Show Grounds
12601 262nd St.
Ashland, NE
68003

SAC Museum
Tour and
Lunch

TRAN 2019 Tractor Drive Across Nebraska Drive Maps

Thursday June 6th Ashland to
Syracuse, Maps 1 & 2

Friday June 7th Syracuse to
Brownville, Maps 3 & 4

Saturday June 8th Brownville
to Falls City, Map 5 & 6

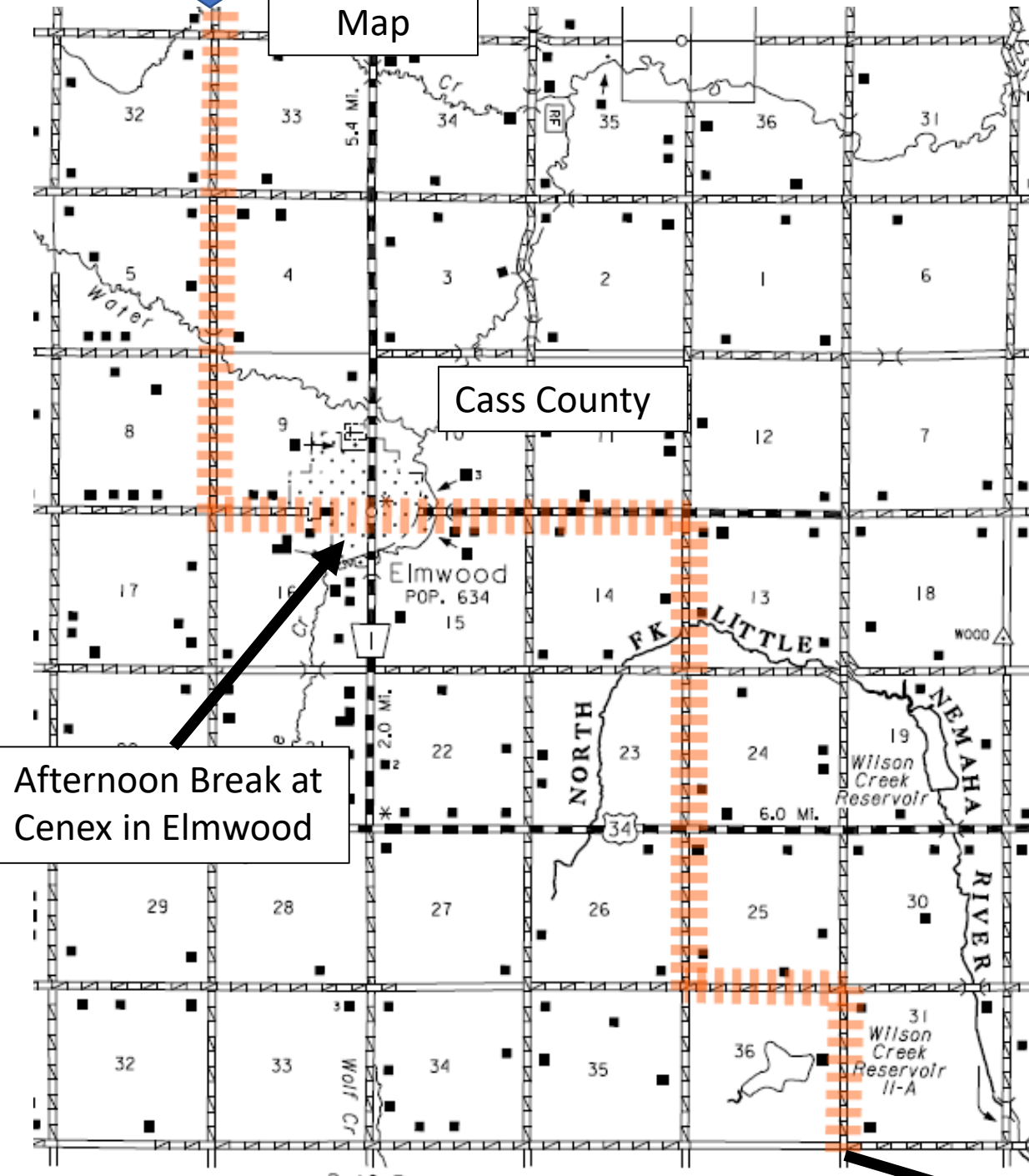


Cass
County

Continued
on next
Map

Map 2

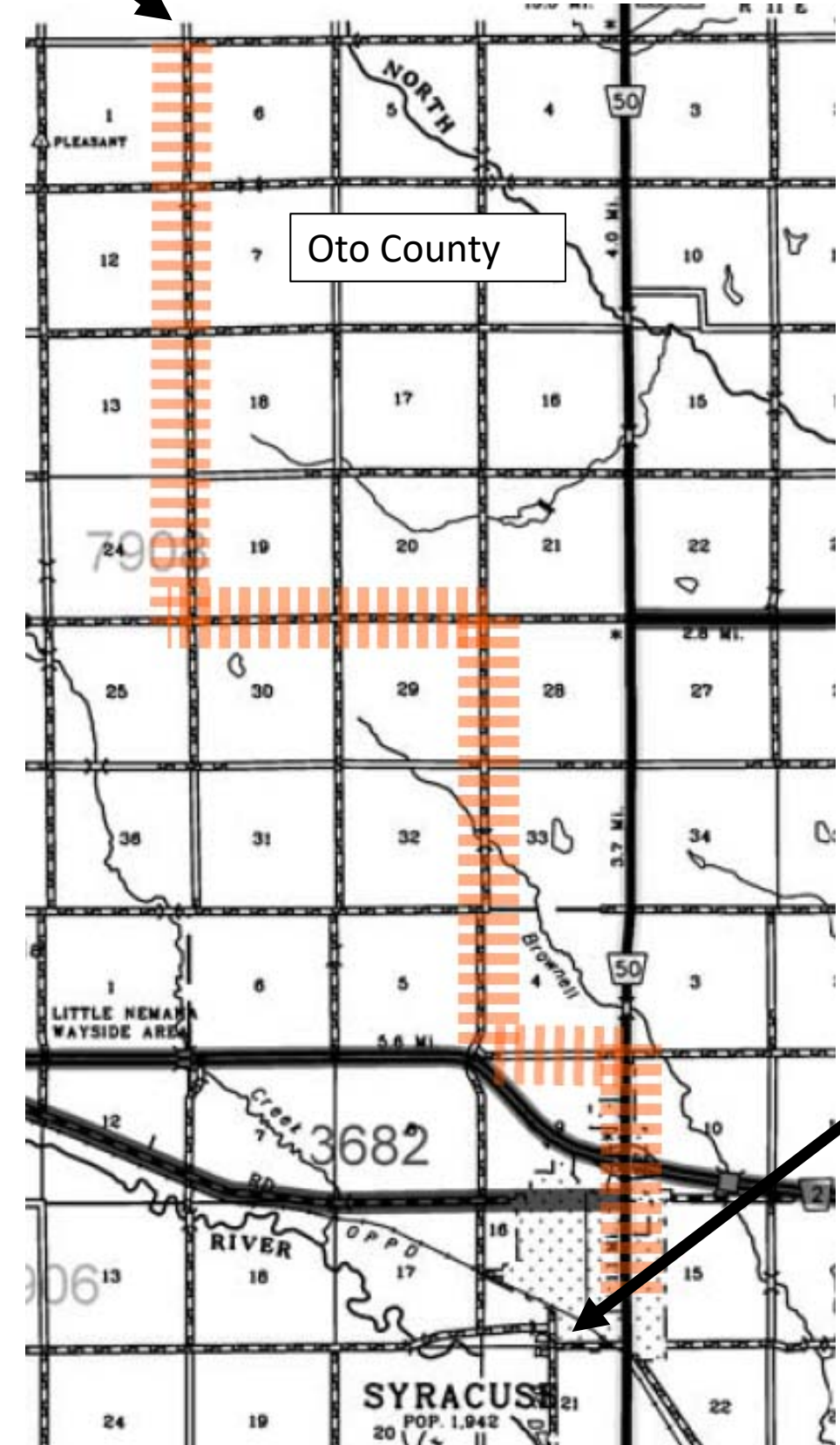
Continued from previous Map



Afternoon Break at Cenex in Elmwood

TRAN Route is marked with dashes

Thursday June 6th Route



Oto County

End Day 1 at Fair Grounds

NORTH

Continued from previous Map



J Road

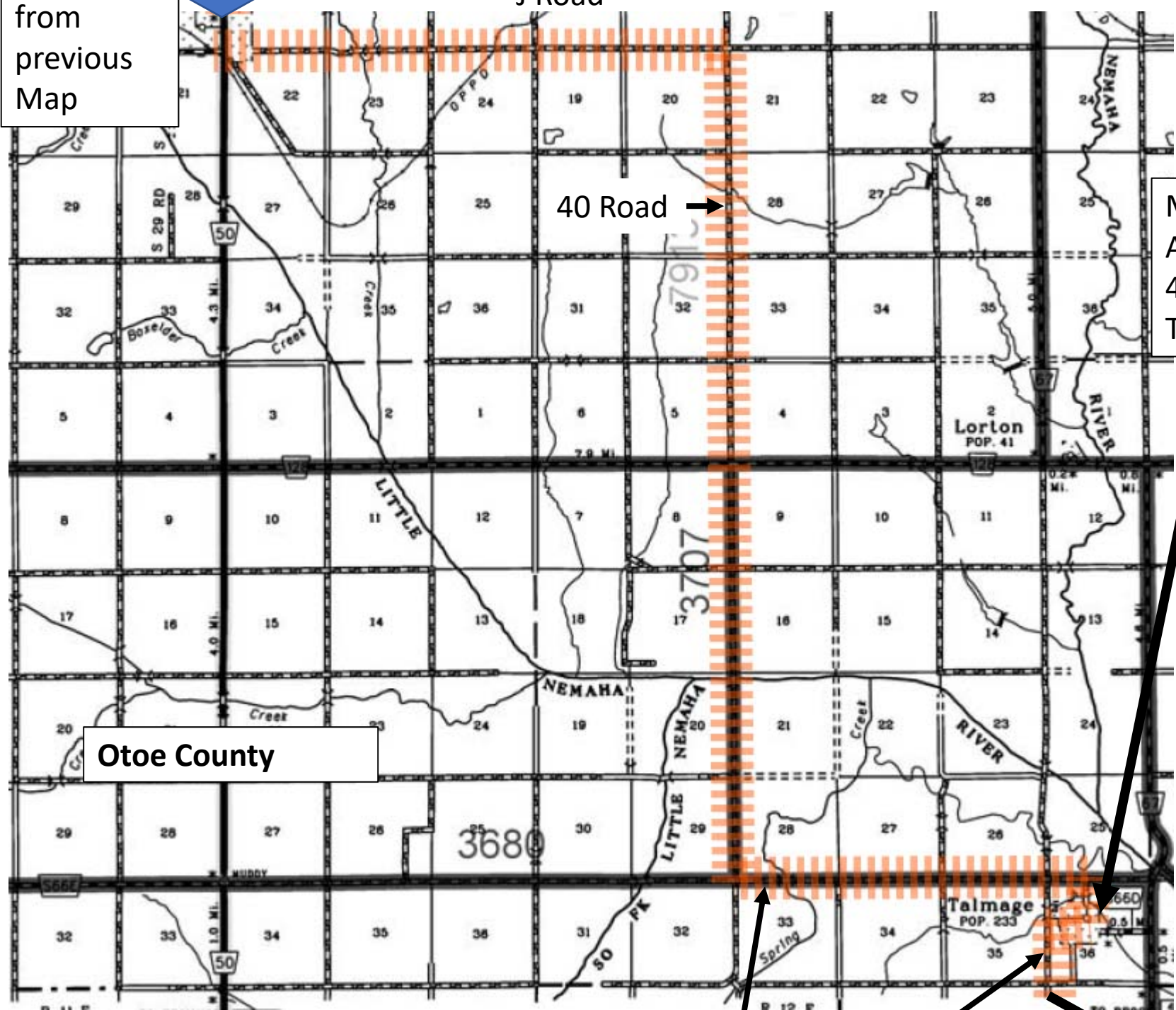
40 Road

Morning Break at American Legion, 404 Main Street, Talmage, NE

TRAN Route is marked with dashes

Map 3

Friday June 7th Route begins at Syracuse

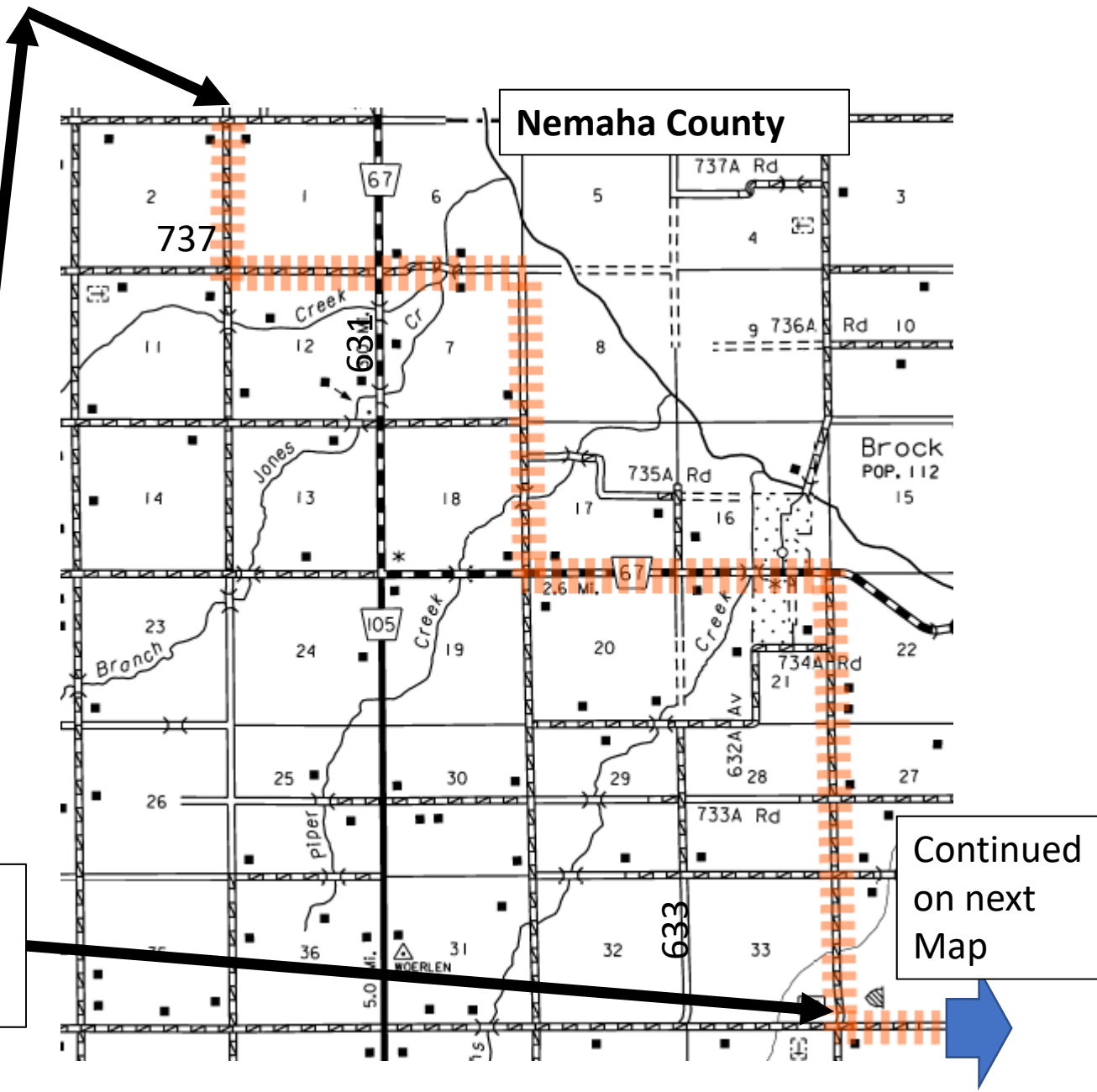


Otoe County

46 Road

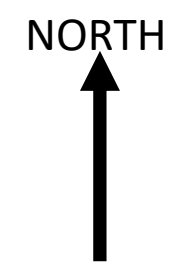
R Road

Lunch at Coryell Park 3 miles south of Brock Nebraska on 633 Ave.



Nemaha County

Continued on next Map

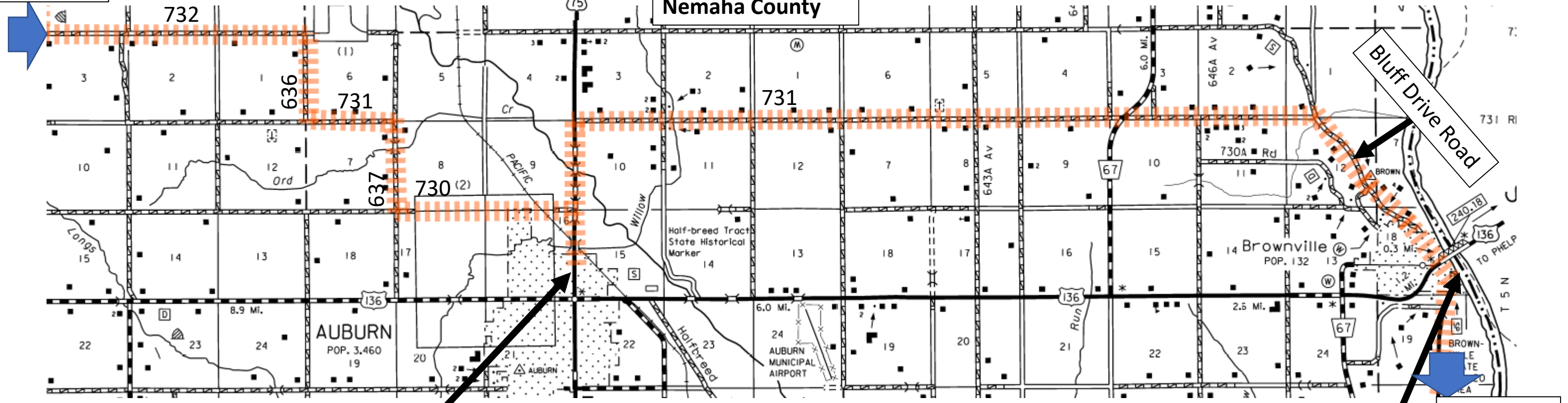


Map 4

Friday June 7th Route

TRAN
Route is
marked
with
dashes

Continued
from
previous
Map



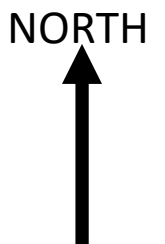
Bluff Drive Road

Afternoon Break and
Fuel Stop at Farmers
Cooperative Station
922 J Street, Auburn
NE

Park Tractors at River
Resort Inn, Spirit of
Brownville Riverboat,
River Inn RV Park
overnight, 72898 648A
Avenue, Brownville NE.
Evening meal and Spirit
of Brownville river
cruise

Continued
on next
Map

End Friday
June 7th in
Brownville



Map 5

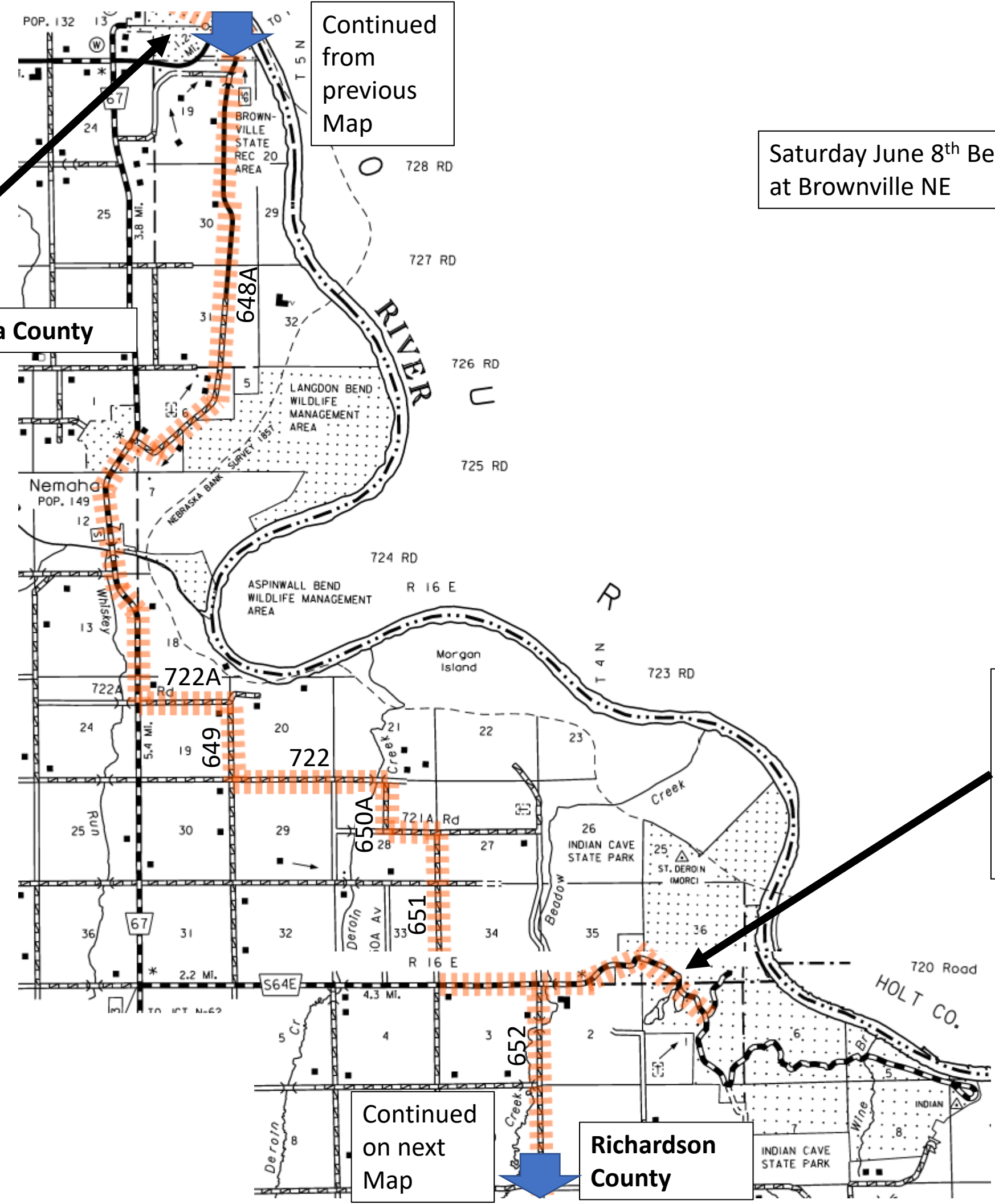
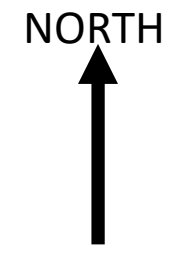
Brownville, NE

Nemaha County

Continued from previous Map

Saturday June 8th Begins at Brownville NE

TRAN Route is marked with dashes



Continued on next Map

Richardson County

Break for Noon Meal, Tractor Show & Drive Through Indian Cave State Park 65296, 720 Rd. Shubert, NE

Map 6

Continued from previous Map

Richardson County

Saturday June 8th Route

TRAN
Route is marked with dashes

NORTH
↑

End of Drive at Richardson County Historical Museum, 1401 Chase Street, Falls City NE

